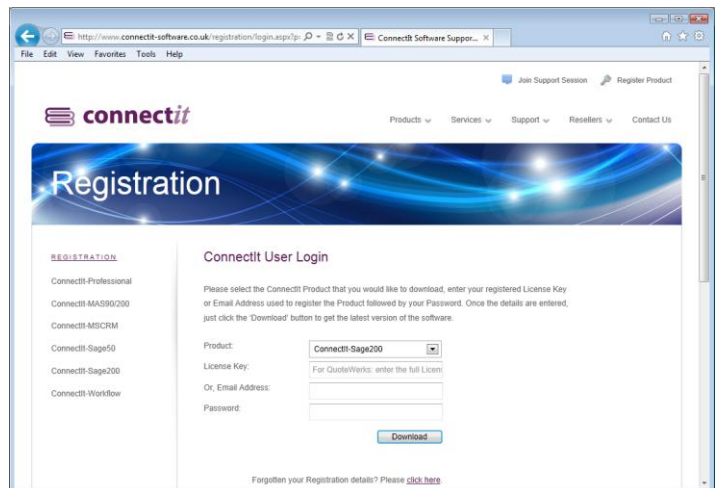


# Step-by-Step Guide to Upgrading

1. In an internet browser, go to <http://www.connectit-software.co.uk/registration/login.aspx?p=CITSA GE200>
2. Enter your **QuoteWerks** license key (or the email address used to register initially) and your password.
3. Click download.

**Note: if you don't know the password, then you can use the "click here" option to be emailed your registration details.**



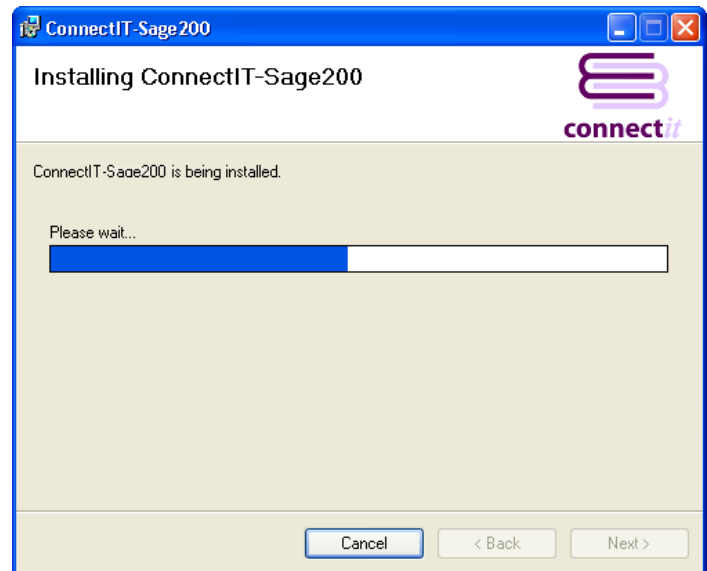
The screenshot shows the Connectit User Login page. On the left, there is a list of products under the heading 'REGISTRATION': Connectit-Professional, Connectit-MAS90/200, Connectit-MSCRM, Connectit-Sage50, Connectit-Sage200, and Connectit-Workflow. The main area is titled 'Connectit User Login' and contains a form with fields for 'Product' (a dropdown menu), 'License Key' (with a note 'For QuoteWerks: enter the full License Key'), 'Or, Email Address', and 'Password'. A 'Download' button is at the bottom of the form. A link 'Forgot your Registration details? Please click here' is at the bottom of the page.

4. The **Connectit Install** download will start; save the file to your hard drive or a convenient place on your network.



5. Once the download is complete, extract the files and run the **setup.exe**.

For more information on installing ConnectIt-Sage200 please refer to the Step-by-Step Guide to Installation.



6. On successful upgrade, users may receive a message that a valid license could not be found. If this message appears, then open the **ConnectIt Registration** utility and click the **Get License Info** button to get the most up to date registration information for your purchase.
7. If new utilities are available in your new version of **ConnectIt-Sage200**, then open the **ConnectIt Registration** utility and click the **Create Menu** button. Any new menu options will be available the next time you start **QuoteWerks**.

**Note:** these final steps only need to be performed once for each QuoteWerks installation on your server and/or remote users.

